

Visualization Tools for Multi-Objective Algorithms - Draft

Mark Giuliano, STSCI

Mark Johnston, JPL Cal Tech

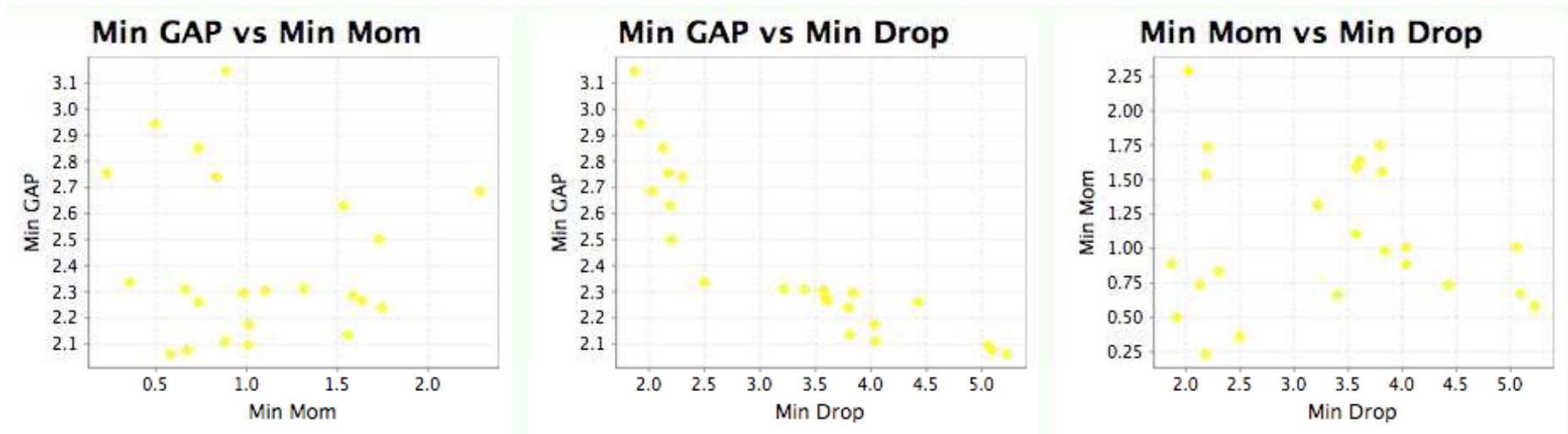
Multi-Objective Scheduling

- Background on Multi-objective scheduling

Interface Challenges

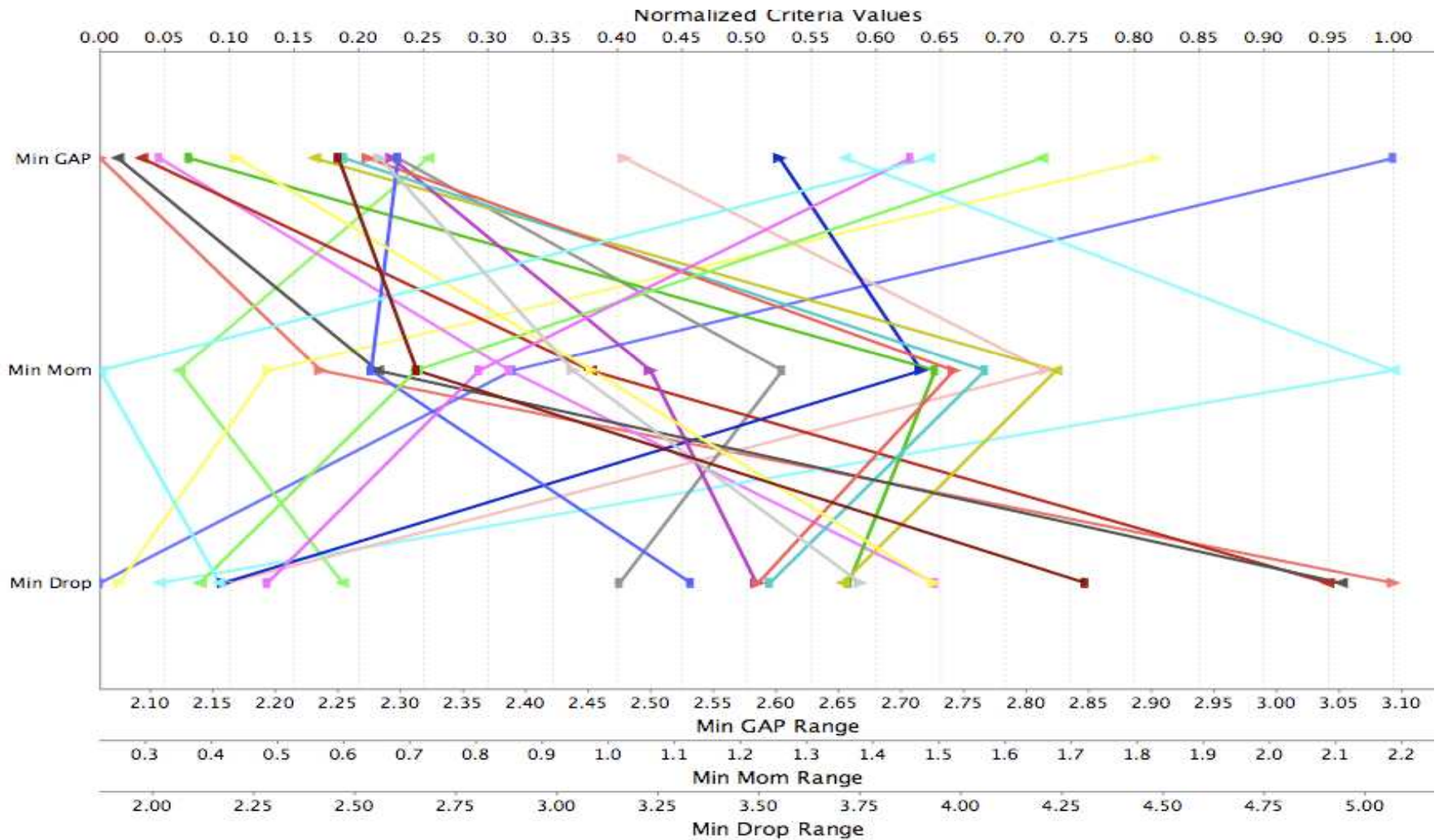
- High dimensionality in objective space
 - Simple X/Y plots insufficient
 - Need multiple views of the data
- Multiple users with different concerns
 - As expressed by different objectives
 - Need to collaborate to determine a mutually acceptable solution
 - Distributed and asynchronous usage

Visualizing the trade-off space



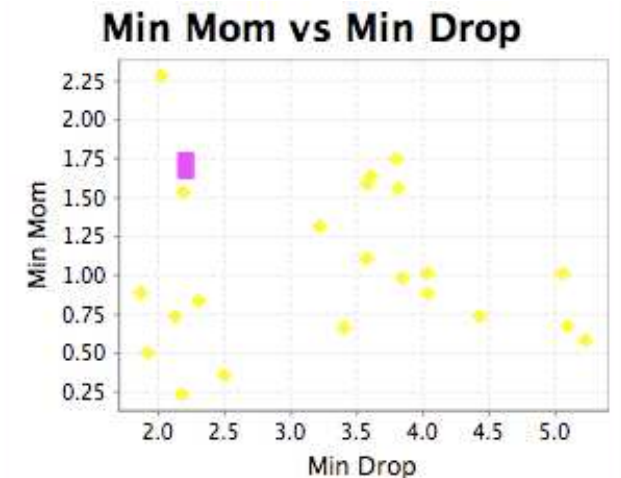
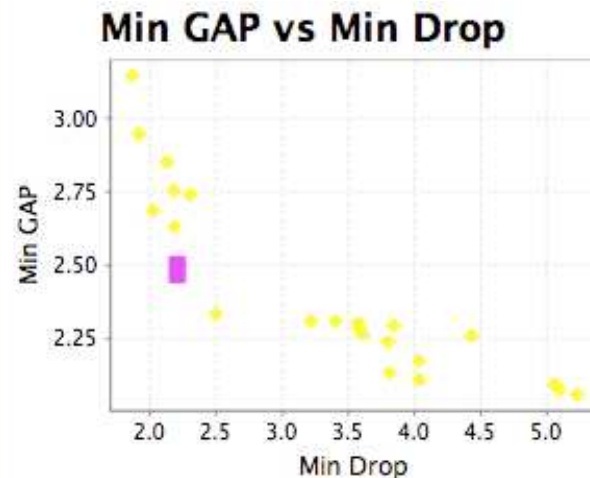
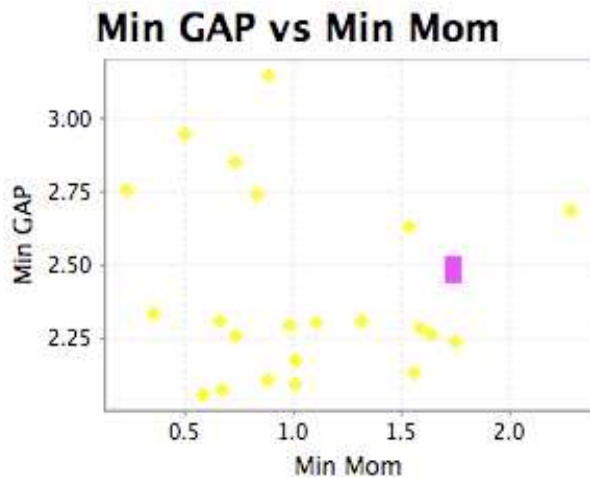
- Traditional X-Y plots show trade offs between 2 objectives
 - Hard to see relationships between the different graphs
 - The number of plots increases rapidly as the number of objectives increases

Parallel Coordinate Graphs



Interconnect graphs

- Interconnect the graphs: selecting a point or region on one graph highlights the point on other graphs

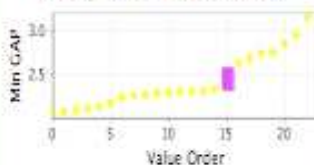


Alternate views

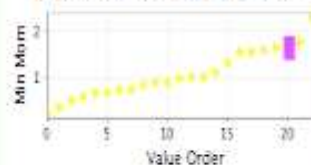
- Table (sortable)
- Value order

Index	Min GAP	Min Mom	Min Drop
0	2.06	0.5820426183...	5.23
1	3.145	0.8862978897...	1.87
2	2.335	0.3567022812...	2.5
3	2.945	0.4990168659...	1.92
4	2.11	0.8820475086...	4.04
5	2.685	2.2850866883...	2.025
6	2.5	1.7325837896...	2.2
7	2.31	1.3148033978...	3.22
8	2.095	1.0102924033...	5.0600000000...
9	2.63	1.5354204210...	2.19
10	2.1350000000...	1.5577325599...	3.815
11	2.24	1.7493877104...	3.8000000000...
12	2.305	1.1054975821...	3.575
13	2.265	1.6368651392...	3.61
14	2.075	0.6720651372...	5.095
15	2.285	1.5873128994...	3.58
16	2.31	0.6619029822...	3.4050000000...
17	2.85	0.7335429807...	2.13
18	2.1750000000...	1.0126939769...	4.035
19	2.74	0.8336212967...	2.305
20	2.755	0.2315510987...	2.18
21	2.295	0.9827801601...	3.845
22	2.2600000000...	0.7345708652...	4.43

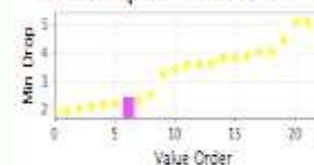
Min GAP vs Value Order



Min Mom vs Value Order



Min Drop vs Value Order



Selecting Preferences

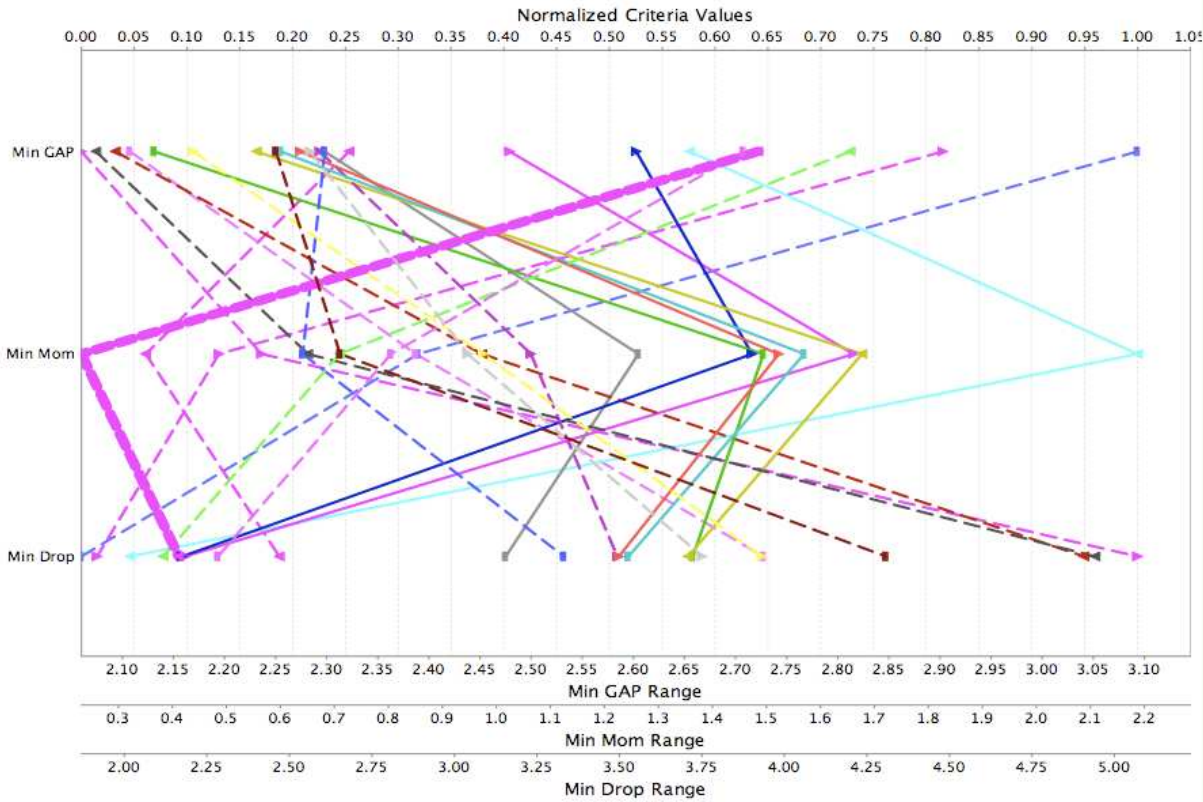
Save Session

Enter Preferences

Min GAP	<input type="text"/>	In Domain <input type="button" value="↑↓"/>
Min Mom	1.2	In Domain <input type="button" value="↑↓"/>
Min Drop	<input type="text"/>	In Domain <input type="button" value="↑↓"/>

Reset Prefs

See All Solutions Refresh



Save Session

Enter Preferences

Min GAP In Domain

Min Mom 1.2 In Domain

Min Drop In Domain

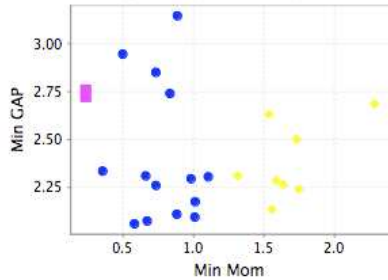
Reset Prefs

See All Solutions

Refresh

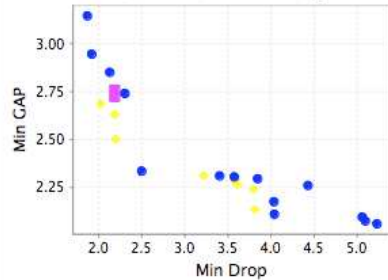
Index	Min GAP	Min Mom	Min Drop
0	2.06	0.5820426183...	5.23
1	3.145	0.8862978897...	1.87
2	2.335	0.3567022812...	2.5
3	2.945	0.4990168659...	1.92
4	2.11	0.8820475086...	4.04
5	2.685	2.2850866883...	2.025
6	2.5	1.7325837896...	2.2
7	2.31	1.3148033978...	3.22
8	2.095	1.0102924033...	5.0600000000
9	2.63	1.5354204210...	2.19
10	2.1350000000...	1.5577325599...	3.815
11	2.24	1.7493877104...	3.8000000000...
12	2.305	1.1054975821...	3.575
13	2.265	1.6368651392...	3.61
14	2.075	0.6720651372...	5.095
15	2.285	1.5873128994...	3.58
16	2.31	0.6619029822...	3.4050000000
17	2.85	0.7335429807...	2.13
18	2.1750000000...	1.0126939769...	4.035
19	2.74	0.8336212967...	2.305
20	2.755	0.2315510987...	2.18
21	2.295	0.9827801601...	3.845
22	2.2600000000...	0.7345708652...	4.43

Min GAP vs Min Mom



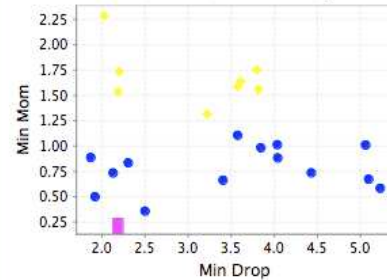
■ Selection Intersection ● My Selections

Min GAP vs Min Drop



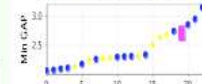
■ Selection Intersection ● My Selections

Min Mom vs Min Drop

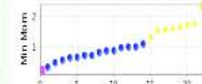


■ Selection Intersection ● My Selections

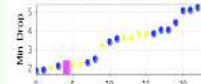
Min GAP vs Value Order



Min Mom vs Value Order



Min Drop vs Value Order



Supporting multiple Users

- Different scheduling constituents will have different priorities
 - Engineering concerned with lifetime issues
 - Science concerned with not losing observations
- Usage distributed over time and location
 - Server based approach

Users login and select interval

Login Form

Select login and enter pass

Login

JWSTScienceOperations
JWSTEngineering
Admin

Password

Do Login

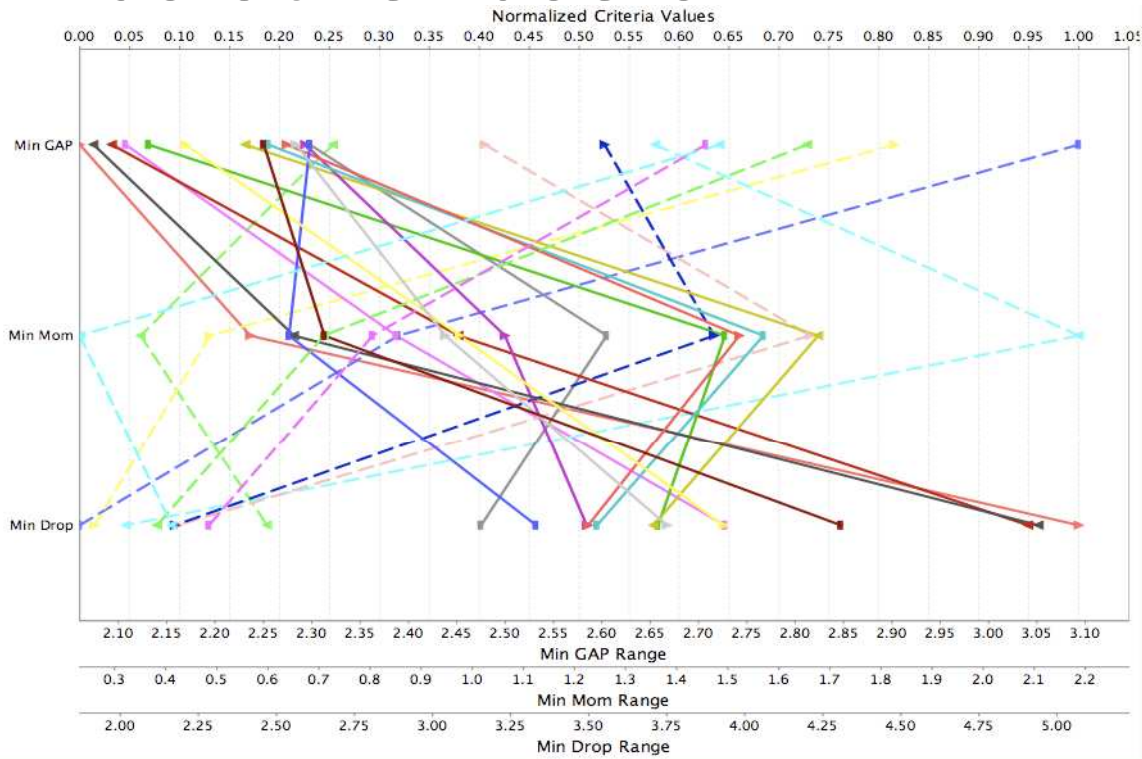
JWSTScienceOperations

Select Schedule Interval

Interval	Status	Consistent?	Out of Date
3-1-2010	Missing Input	true	false
4-1-2010	Missing Input	NA	true
5-1-2010	Missing Input	NA	true

Run Interval

Can view their own selections as well as other users.



Save Session

Enter Preferences

Min GAP In Domain

Min Mom In Domain

Min Drop In Domain

Reset Prefs

See All Solutions Refresh

Index	Min GAP	Min Mom	Min Drop
0	2.06	0.5820426183...	5.23
1	3.145	0.8862978897...	1.87
2	2.335	0.3567022812...	2.5
3	2.945	0.4990168659...	1.92
4	2.11	0.8820475086...	4.04
5	2.685	2.2850866883	2.025
6	2.5	1.7325837896	2.2
7	2.31	1.3148033978...	3.22
8	2.095	1.0102924033...	5.0600000000...
9	2.63	1.5354204210	2.19
10	2.1350000000...	1.5577325599...	3.815
11	2.24	1.7493877104...	3.8000000000...
12	2.305	1.1054975821...	3.575
13	2.265	1.6368651392...	3.61
14	2.075	0.6720651372...	5.095
15	2.285	1.5873128994...	3.58
16	2.31	0.6619029822...	3.4050000000...
17	2.85	0.7335429807...	2.13
18	2.1750000000...	1.0126939769...	4.035
19	2.74	0.8336212967...	2.305
20	2.755	0.2315510987...	2.18
21	2.295	0.9827801601...	3.845
22	2.2600000000...	0.7345708652...	4.43

Min GAP vs Min Mom

Min GAP vs Min Drop

Min Mom vs Min Drop

Min GAP vs Value Order

Min Mom vs Value Order

Min Drop vs Value Order